



oil and gas radar

Editor

Paul Sullivan

paul.sullivan@pex.com.au

(t) 08 9272 6555

Terms & Conditions

The information in this PDF file is subject to Pex Publications Pty Ltd's full copyright and entitlements as defined and protected by international law. The contents of the file are for the sole use of the addressee. Pex Publications advises that under the terms & conditions of subscription to Oil and Gas Radar, the subscriber is entitled to distribute, transmit or in other ways forward each edition to within the physical office(s) of the particular subscribing business or organisation. Under no circumstances may subscribers distribute, transmit or in any other way forward Oil and Gas Radar to other companies, non-controlled subsidiaries or affiliates, contractors, consultants, associates, non-company individuals or any other external party without the written prior approval of an authorised representative of Pex Publications Pty Ltd.

- 1 Ensco-7500 almost certainly to be released in September following conclusion of latest option period, with rig requirements in mid-term uncertain until next stage of Chevron's exploration/appraisal program, beyond 2010, confirmed; Atwood Eagle remains under contract until newbuild Atwood Osprey arrives early next year, with option for Chevron to keep both deepwater rigs on
- 2 Nanhai-6 booked in for 5-year survey Q4 this year, during Woodside contract, making option of rig drilling MEO's Artemis-1 in WA-360-P [also Petrobras 50%] even more unlikely
- 3 Apache adds another appraisal in Julimar/Brunello permit WA-356-P [also Kufpec 35%], Balnaves-4, to Stena Clyde's schedule when floater returns from Singapore later this month; Stag-36H in WA-15-L also added to jackup Ocean Shield's schedule
- 4 Lucrative exploration permit WA-268-P -- from where original Jansz, Chandon & most recently 137m gas column Yellowglen discoveries made -- being renewed by JV [*Chevron 48.75%, Shell 25%, ExxonMobil 25% & Osaka Gas 1.25%]
- 5 Atwood Eagle on location at Acme-1 in WA-205-P [*Chevron 66.67% & Shell 33.33%], while other deepwater floater Maersk Discoverer mobilised to Tiberius-1 in Woodside's 100%-held outer Exmouth Sub-basin WA-434-P
- 6 Laurel-1 spudded 12 June & mid-week 406mm hole drilled to section TD at 1248m MD & pulling out of hole -- Apache again sole risking [TP-7 (4): *Apache 64.66%, Santos 18.71%, Tap 12.47% & Pan Pacific 4.16%]; Barberry-1 will be next well on Ocean Shield's schedule [see also item 12]
- 7 MBCentury Rig-7 started multi-well program for Central Petroleum last Friday by spudding Ooraminna-2 in EP-82 [*Central 70%, PXA 20% & Red Sky 10%]; next well will be Johnstone West-1 in EP-115 [*Central 60%, PXA 20%, Trident 10% & Red Sky 10%]
- 8 Spud imminent of Lihir Gold's first geothermal well, in new program of up to seven wells, using MBCentury Rig-14 on Lihir Island in Papua New Guinea
- 9 Australian Drilling Services Rig-6 arrived in PNG & being re-assembled to drill one-off well for New Guinea Energy, Panakawa-1 in 100%-held PPL-267
- 10 Strategic Marine to build 48.5m landing craft for Geraldton's Bhagwan Marine to be used for low-incline beach landings on WA oil & gas projects

- 11 Autoridade Nacional do Petroleo (ANP) do Timor Leste started planning new licensing round, scheduled for 2011/2012, for offshore Timor Leste Exclusive Area & Joint Petroleum Development Area in Timor Sea; contact Mateus da Costa, email mateus.dacosta(a)anp-tl.org or phone +67 0332 4098
- 12 Apache
1. Rare Apache onshore drilling program, based on Airlie Island, being evaluated
 2. Apache looking to "Add oil reserves for development through land-based ERD (extended reach drilling) program, gas upside"
 3. Plan is to cost-effectively access stranded reserves in undeveloped fields, particularly Taunton
 4. Apache undertaking sole-risk drilling program around these fields using jackup Ocean Shield
 5. First target, Bath-1 in TL-2, encountered oil pay in P. Burgeri sands & extended Taunton field to the east
 6. However ASX releases from non-consent partners appeared to downplay Bath-1 results
 7. Ocean Shield started second well, Laurel-1 in TP-7, again sole-risked by Apache, with Barberry-1 in same region to follow
 8. Taunton-2 in Q4 2002 confirmed presence of oil column bypassed by Taunton-1 in 1991
 9. Horizontal sidetrack from Taunton-2 produced light oil (49° API) at average rate of 3000BOPD
 10. Result led to mid-case potential of 3-3.5mil bbl for Taunton field, ~6km from Airlie Island production facilities
 11. TL-2: *Apache 51.8%, Pan Pacific 23.2%, Santos 15% & Tap 10%
 12. TP-7 (4): *Apache 64.66%, Santos 18.71%, Tap 12.47% & Pan Pacific 4.16%
 13. Apache predecessor Hadson drilled several onshore-to-offshore wells
 14. Big rig initially imported in 1991 for program including Tanami-3 in EP-307 & Alkimos-1 in TL-1
 15. Wells directionally-drilled by Indonesian-based Medco's giant 7000m Ideco E-2100 Rig-10
 16. Rig stacked in Onslow for 16 months looking for contracts before demobilised back to Indonesia in 1996
 17. Nothing in Australia at moment of that capacity; Weatherford Rig-826 deepest at 4500m
 18. Biggest units in wider region Parker Rig-246, with 6000m capacity, & Parker Rig-188 (7300m); both in NZ
 19. Rig-246 on long term geothermal work for Mighty River Power, Rig-188 stacked
 20. Offshore, Apache plans to increase oil production from mature fields using jackup Ocean Patriot
 21. Targets include Stag-34,-35&-36H in WA-15-L, Bambra-10 in TL-1 & East Spar re-entry in WA-14-L
 22. Exploration wells Barberry-1 in TL-2/TP-7 & Beam-1 in WA-13-L also to be drilled by Ocean Patriot

Continued next page...

23. Apache to drill number of Julimar/Brunello field appraisals in WA-356-P [also Kufpec 35%]
24. On floater Stena Clyde's schedule are firm Balnaves-3&4, with other WA-356-P prospects Gaffer-1 & Gemtree-1
25. Other wells to be drilled by Stena Clyde once rig returns from Singapore include;
 - Zola-1 in WA-290-P
 - Crusader-1 in WA-35-L (Van Gogh/Coniston)
 - Spar-2 in WA-13-L/WA-4-R
26. Plus Apache involved in four BHP Billiton-operated Macedon field development wells in WA-42-L & Black Pearl-1 in WA-12-R

13 Flex

1. British Virgin Island-based Flex LNG announces JPDA06-101(A) resource upgrade in Timor
2. Increase in Gas Initially In Place (GIIP) of up to 40% reported for Chuditch & surrounding structures
3. Flex now estimates GIIP for combined Chuditch Main, Chuditch West & Wombat structures of +3TCF
4. Increase based on preliminary results from Anita & Wombat 2D seismic surveys
5. Bergen's BOS Atlantic completed 2D survey for then permit operator Minza in September last year
6. Anita 2D program, including optional data in Wombat area, totalled 937.4km - more than committed 500km
7. Wells drilled ahead of 2011 commitment deadline if Flex can secure farmin partner
8. Chuditch-1 P&A'd with significant gas column by Shell in 1998, but drilled off crest of Plover structure
9. Flex extends by six months agreement to acquire Minza, first signed in June last year
10. Extension to give Flex LNG more time to finalise ongoing JV partner selection process for JPDA06-101(A)
11. Jersey-based non-listed Minza's primary asset is 100% of JPDA 06-101(A) containing ~700BCF Chuditch gas accumulation
12. Flex believes area could hold sufficient gas to support floating liquefaction plant
13. Norway-listed company planning numerous floating LNG projects worldwide with 4 vessels ordered from Samsung Heavy Industries
14. Flex also advancing Australian project with unnamed "Asian national oil company"
15. Project likely to be with Thailand's PTTEP looking at floating LNG concept for Oliver gasfield
16. Preliminary engineering studies started on this concept for Oliver-2 in AC-P-33
17. Drilled to PTD 3233m by Songa Venus in October last year, Oliver-2 discovered 81m net gas reservoir
18. PTTEP said it has "good potential for production with the floating liquefied natural gas technique (FLNG)"
19. Thai Government-controlled PTTEP bought out JV participants Stuart & Albers Group soon before Oliver-2 spud

14 Reliance

1. Possibility deepwater floater Blackford Dolphin could be drilling in Timor before end of year
2. Rig, under contract until late 2011 for India's Reliance Industries, operating on east coast of India
3. Reliance operates PSC S06-06 & farmed in JV partners Indian Oil Corp & Oil India Ltd for 12.5% each
4. Reliance already shot 325km 2D & 1300km² 3D seismic in S06-06 before 25% relinquishment in first permit term
5. Well due in secondary term of permit, however Reliance granted extension with drilling scheduled for this year
6. Extension "due to lack of availability of suitable deep water drilling rig in the market"
7. Reliance expected to utilise Blackford Dolphin for well in steeply sloping permit between 1000m-2000m water depth
8. Fred Olsen-owned Blackford Dolphin is Norwegian-built Aker H3.2 semi-submersible built in 1974
9. Rig upgraded to deepwater capability in 2006/2007, increasing water depth capacity from 183m to +2100m, drilling to 9144m
10. Reliance also operates with 100% Bonaparte Basin WA-405-P, where Geo Atlantic shot ~400km² 3D in January
11. PGS' Beaufort Explorer also completed ~1700km 2D for Reliance in WA-405-P during Christmas period 2009
12. Decision to enter secondary program required next month, with well due in July 2012

15 Seismic

1. Fugro's Geo Natuna sailed on June 4 to Woodside's Laverda 3D following port call in Darwin for vessel maintenance
2. 150km² Laverda 3D recording in Carnarvon blocks WA-28-L, WA-23-L, WA-36-R & WA-271-P
3. Surveying will only continue in area until June 30 due to conflicts with humpback whale migration pathways after this time
4. As result of delay in starting Laverda, Woodside likely to drop Vincent M1 4D rather than start & being unable to complete in time
5. Fugro's Geo Atlantic now 75% through OMV's 3955km² Schiele 3D in Exmouth Sub-basin blocks WA-362-P & WA-363-P
6. Fugro's Geo Celtic believed to be leaving region following completion of 8000km² Carnarvon Basin Eendracht MC3D, anticipated in mid-July
7. PGS' Ramform Explorer suspended work on 6000km² PNG MC3D late May for yardstay in Singapore
8. Upgrade work will include installing new geostreamers ahead of mobilising to Australia second week of August
9. Ramform Explorer to record 650km² contract survey for Total in Browse permits WA-408-P & WA-343-P, starting around mid-August
10. Vessel then going to previously planned 7500km² Aurora MC3D across multiple Browse blocks
11. Operators include Woodside, Santos, Hunt, Inpex, Nexus & Albers Group

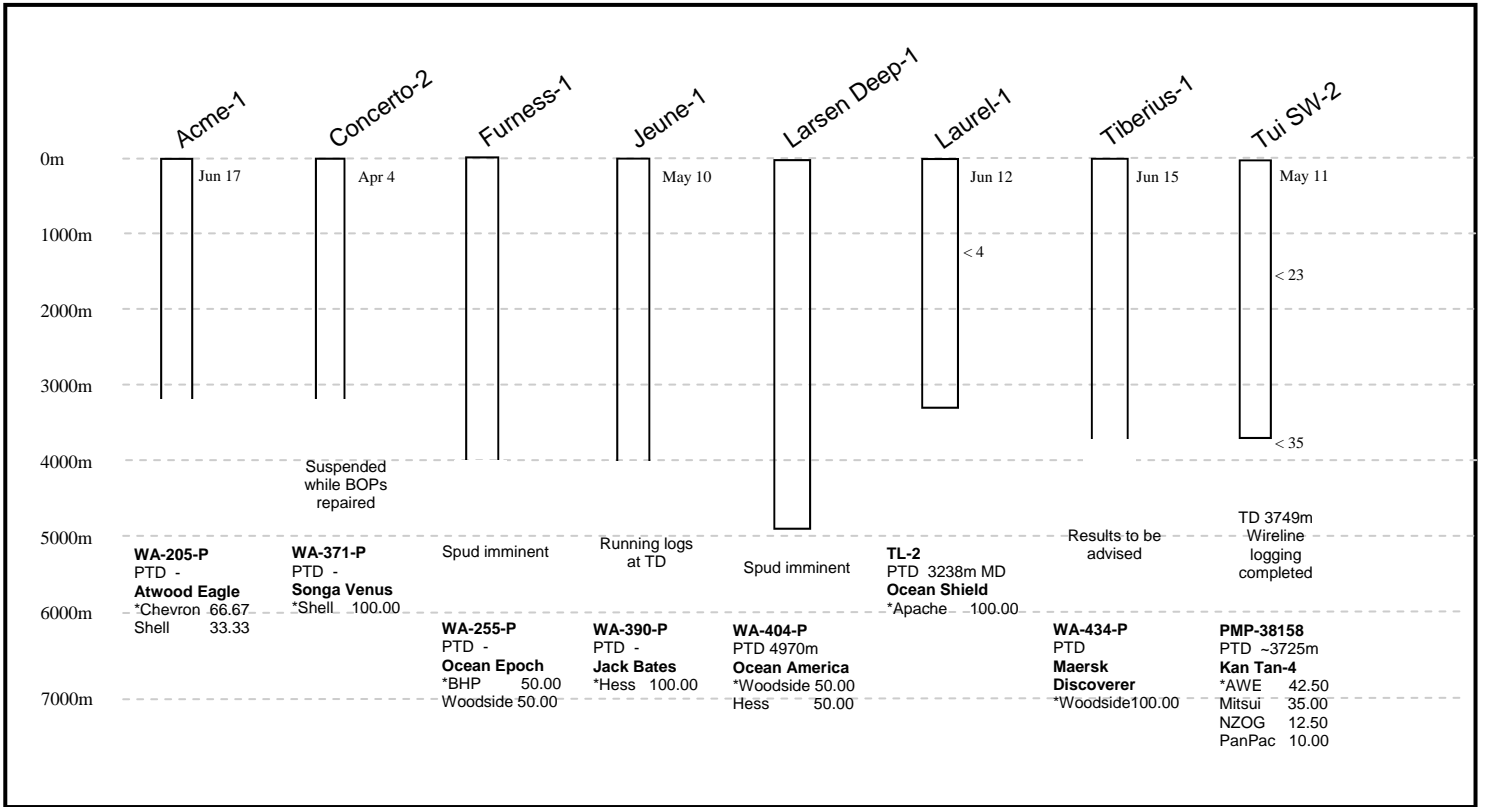
Continued next page...

12. Onshore, Terrex Crew 401 due to resume in Amadeus Basin for Central June 23, with around 400km of 1380km program remaining
13. Crew 402 48.7% through Santos' 254km² Tintaburra 3D on June 16, forward program uncertain
14. One possibility is 550km 2D for Georgina Basin Energy in EP-103 & EP-104
15. After shut down, Crew 404 to resume on July 1 for Metgasco with 200km 2D in multiple Gunnedah Basin permits
16. Crew then goes to Santos for 310km Gunbar 2D near Roma in Surat Basin July 22, followed by Origin's 551km Phoenix 2D, also in Surat, around Aug 27
17. Final scheduled survey for crew 404 at this stage is Santos' 103km Windurong around Oct 3, sending crew back to Gunnedah Basin
18. Crew 403 to finish Geoscience Australia's deep crustal survey around July 4, now 80.6% complete
19. Crew then going to Buru from mid-August for two Canning Basin surveys
20. Latent's as-yet-contracted Warro 3D, involving up to 160km² in Perth Basin permit EP-407, likely to be deferred to 2011

16 Onshore rigs

1. Beach assessing rig options for 6-well Cooper Basin conventional oil & gas program
2. Couple of rigs understood to be in contention, but scheduling difficult due to flooding
3. Large part of program in PEL-91, which is still affected by flooding although starting to recede now
4. Up to 7.5mil bbl (P10) targeted in 4-well program starting September/October once access can be gained [PEL-91: Drillsearch 60% & Beach 40%]
5. Plans also to reinstate Chiton oilfield production by August 2010 once new access road to field can be constructed
6. Similarly seismic crews waiting for access to start 434km² Aquillus 3D survey in PEL-91
7. Import of Ensign Rig-16 from Thailand continuing for start of Beach's shale gas exploration program in Cooper Basin PEL-218
8. 4267m capacity rig on schedule for mid-July spud of Holdfast-1, to be followed by Encounter-1
9. Vertical exploration wells targeting thickest & most over-pressured shale sections
10. "Sweet spots" to be selected for later stage lateral drilling & multi-stage fracking
11. PEL-218 Permian: *Beach 90% & Adelaide 10%
12. Adelaide Energy likewise assessing rigs for Pirie-1 in Cooper Basin PEL-105, also deferred due to flooding
13. Hunt rig one of options looked at, either incoming Hunt Rig-4 or Rig-2 after Stuart program
14. If Hunt Rig-2 used, deeper capacity rig would be required later to take well to TD
15. Once tight sands fractured Pirie with un-risked P10 potential oil-in-place of 23mil bbl (P50 2mil bbl)

OFFSHORE



ONSHORE

